

STANISLAUS COUNTY HEALTH SERVICES AGENCY

Respiratory Virus Surveillance Report

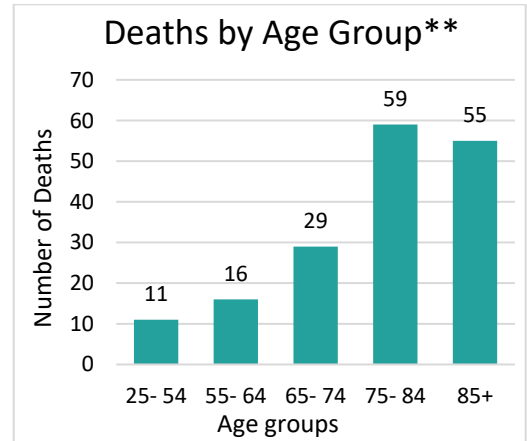
SURVEILLANCE REPORT: Dec 10 – Dec 23

Overview

- COVID-19 Cases and Percentage of positive tests have been stable.
- RSV, influenza, and COVID-19-related Emergency Department visits have increased.
- Wastewater data shows Modesto's and Turlock's RSV, Influenza and COVID have Increased.

COVID-19 MONITORING

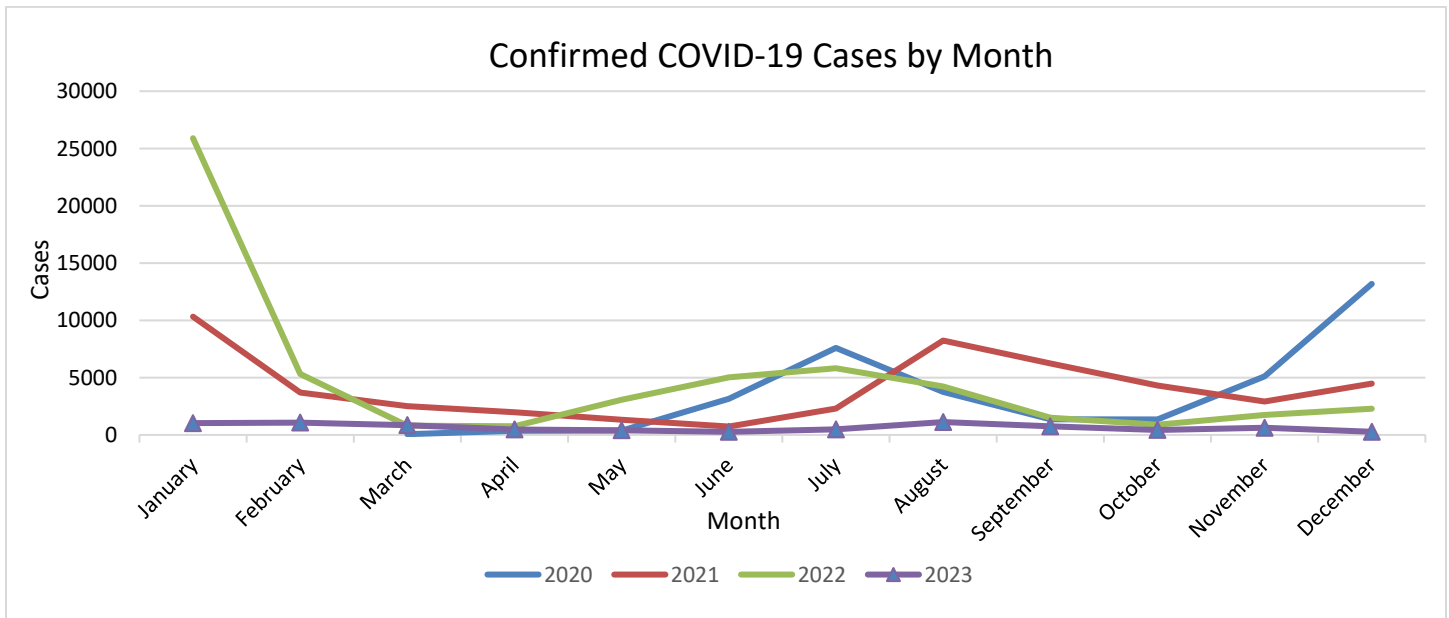
Age	Report Weeks			Fiscal Year: 22/23		
	Count	%	Rate	Count	%	Rate*
0-17	88	20.70 %	0.59	3,137	14.7%	21.01
18-44	125	29.30%	0.6	8,414	39.5%	40.17
45-64	102	23.90%	1.79	5,456	25.6%	42.25
65+	110	25.80%	1.48	4,260	20.0%	57.28
Total	425	-	-	21,291	-	-
Deaths	1	-	-	170	-	-



*Rate per 1,000 population; Data Source: California Department of Finance

** Total Deaths from July 1, 2022, through June 30, 2023. Age groups with less than 10 deaths are not displayed.

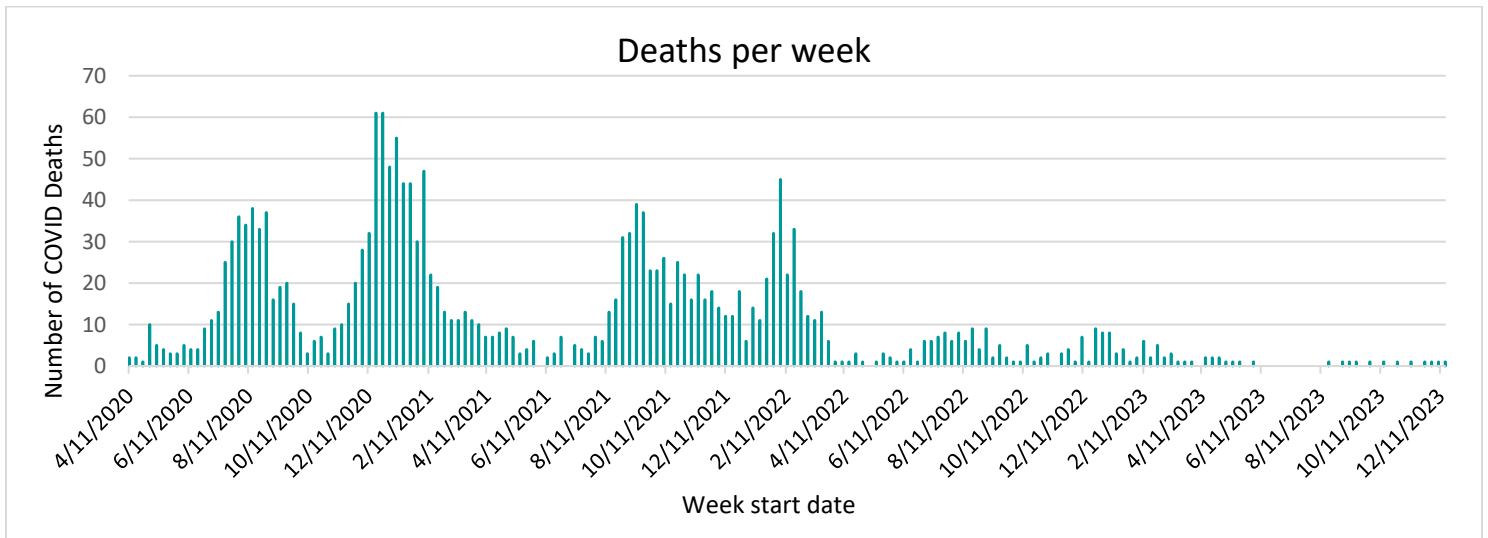
This graph shows the daily number of COVID-19 confirmed cases reported among Stanislaus County residents by episode date.



Note: Due to delays in specimen processing, data may be incomplete.

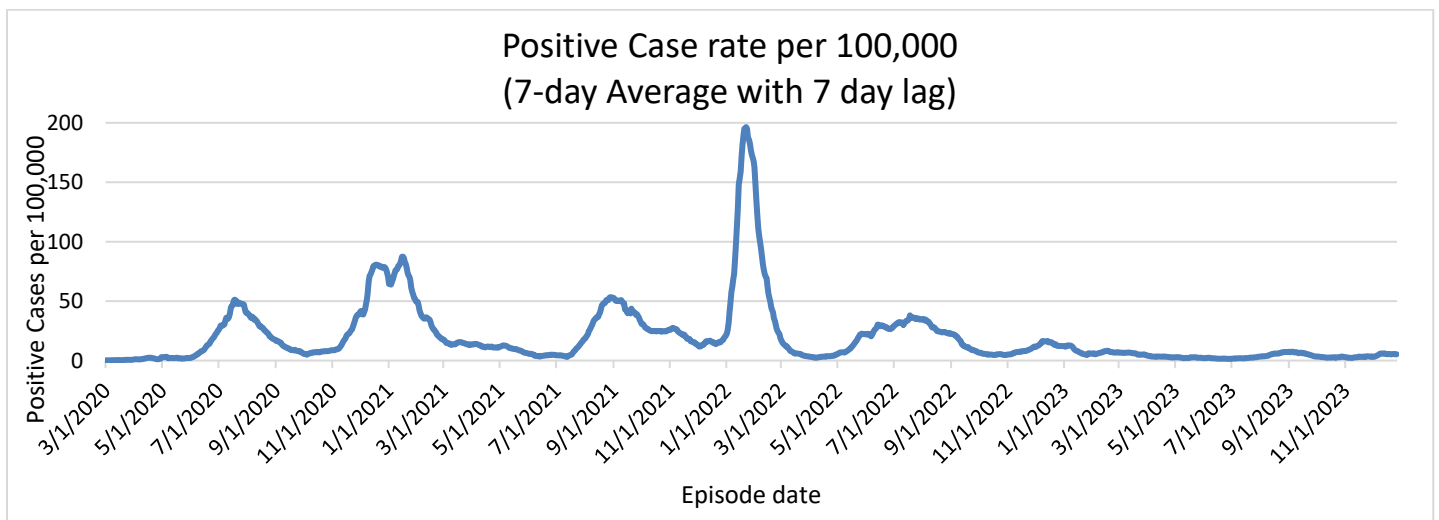
Reported COVID-19 cases and deaths on this page are those that have been confirmed by Stanislaus County Public Health.

[Type here]

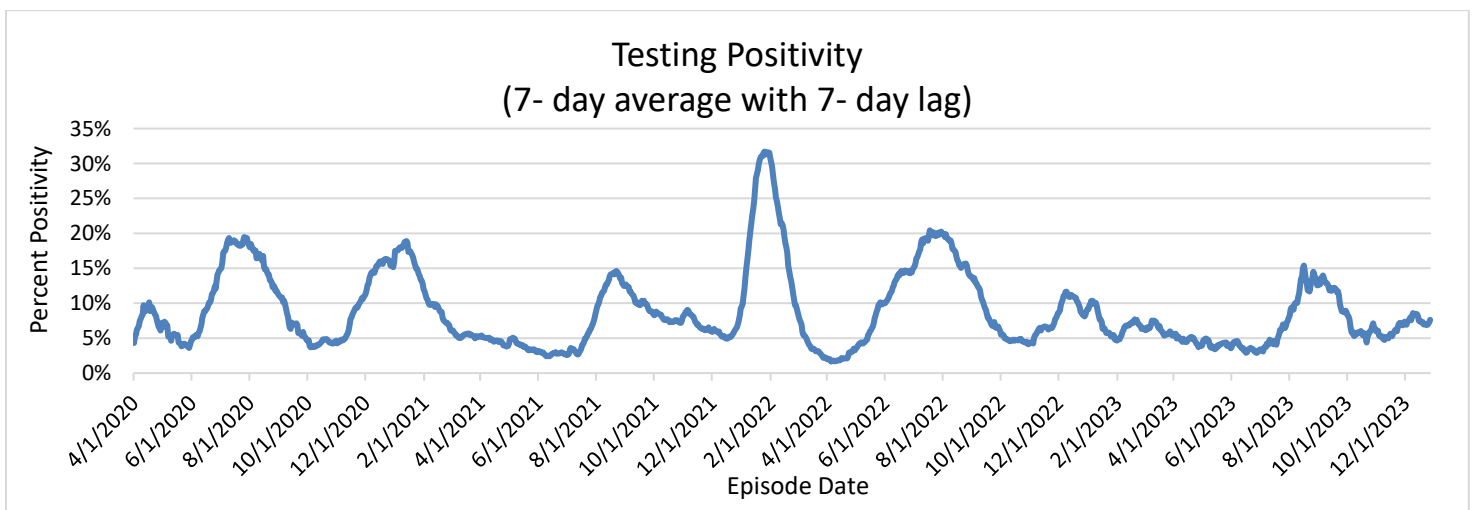


Note: Due to delays in death reporting and assessment, data may be incomplete. Reported COVID-19 cases and deaths on this page are those that have been confirmed by Stanislaus County Public Health.

The graph below shows positive case rate (number of positive cases per 100,000 county population), 7-day average with 7-day lag, through the report week. This does not include the state adjustments and may vary from state measures.



The graph below shows testing positivity (percent of tests that are positive), 7-day average with 7-day lag, through the report weeks. This may vary from state measures.

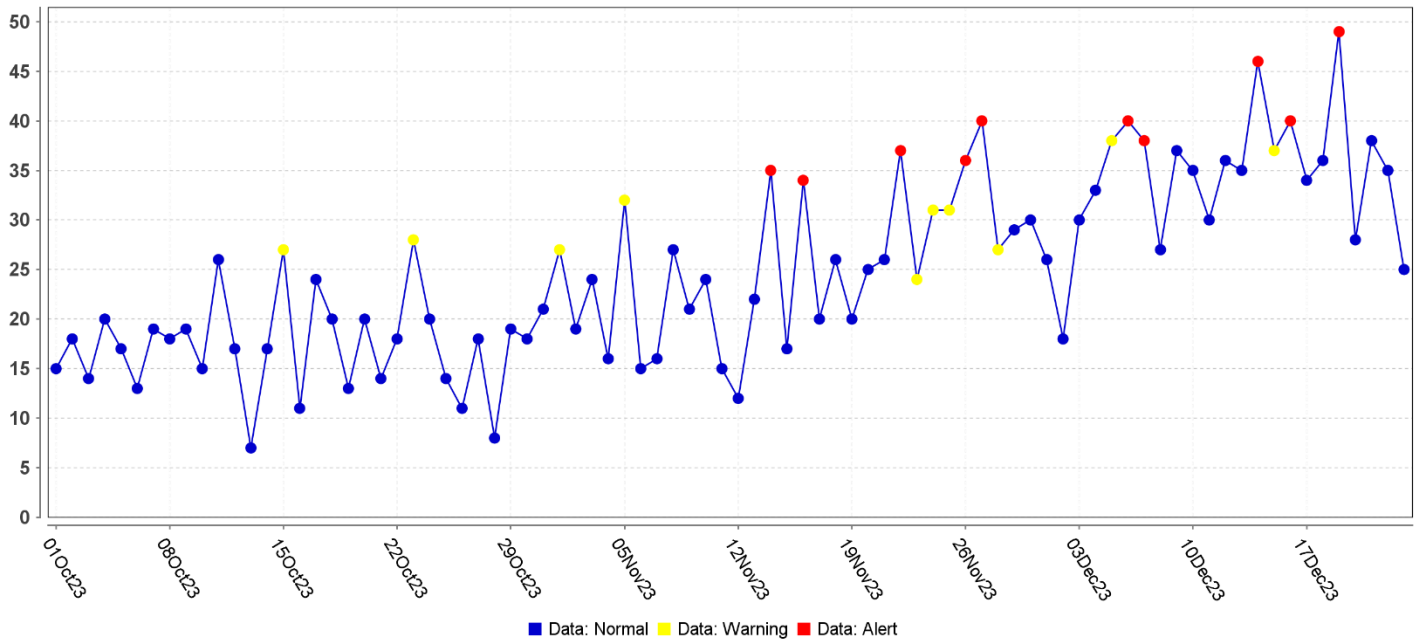


COMMUNITY MONITORING – EMERGENCY CASES

COVID-19 LIKE ILLNESS

This graph shows the number of emergency room visits for COVID-19-like illness for all Stanislaus County Hospitals.

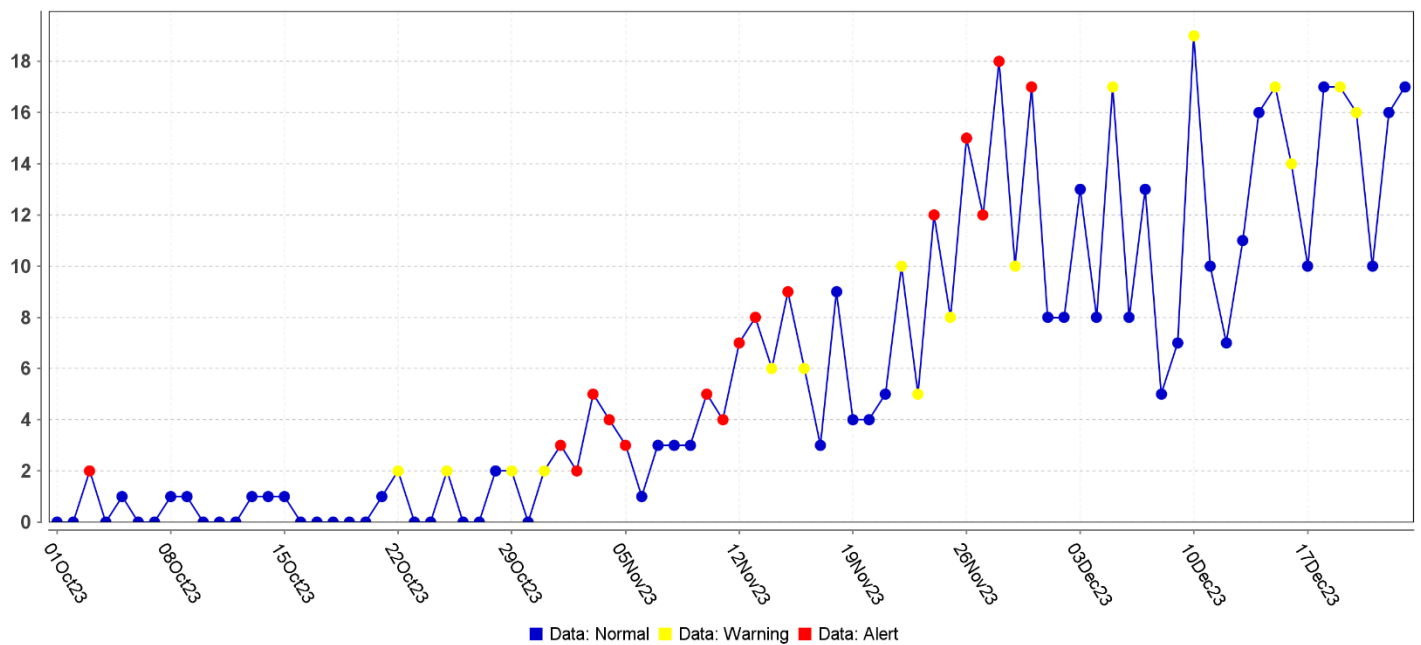
Daily Data Counts



RSV MONITORING

This graph shows the number of emergency room visits for RSV for all Stanislaus County Hospitals.

Daily Data Counts

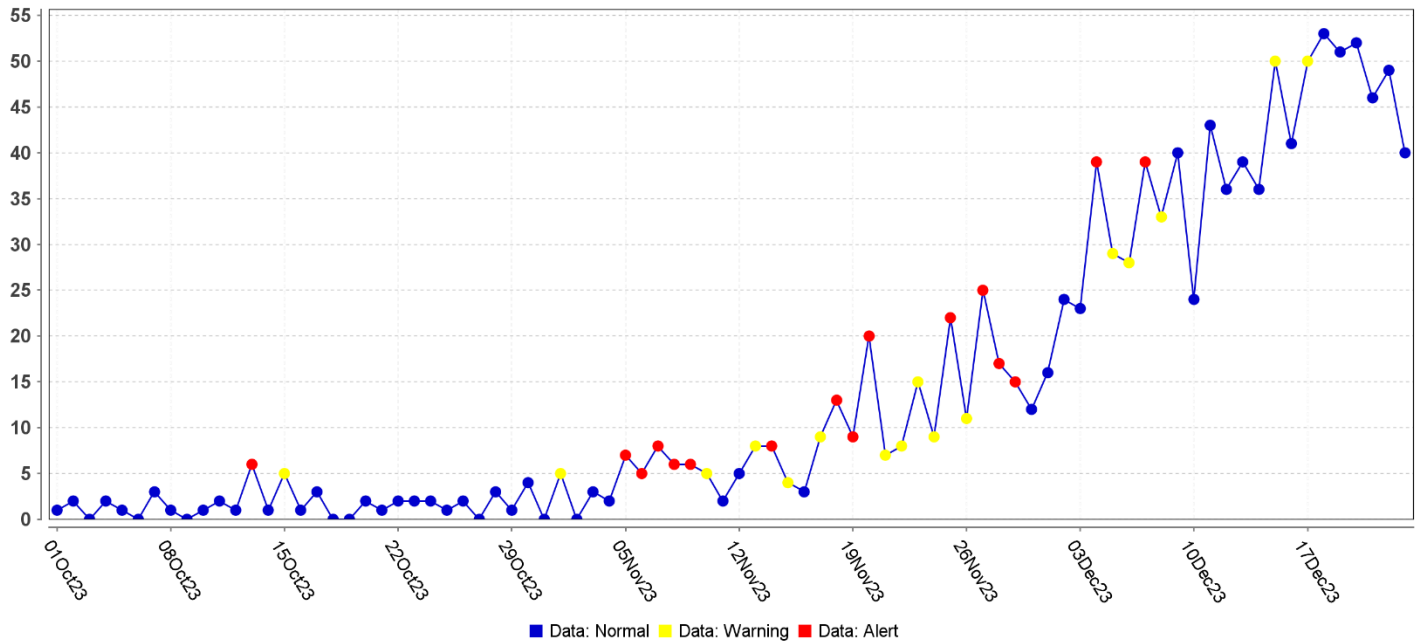


INFLUENZA MONITORING

Influenza like illness

This graph shows the number of emergency room visits for Influenza-like illness complaints for all Stanislaus County Hospitals.

Daily Data Counts



SEVERE INFLUENZA

This chart shows the number of people who are in the intensive care unit and deaths for children under 18 from influenza.

	Report Weeks	This Influenza Year
Intensive Care Unit	3	5
Death under 18 years old	0	0

The influenza year begins MMWR week 40, this year beginning on October 1.

Laboratory detections of respiratory viruses other than COVID-19

This chart looks at how many samples were tested for different kinds of influenza-like illness by the regional San Joaquin Public Health Laboratory (including Stanislaus County specimens), during the report weeks, and how many were positive, in order to monitor what is currently spreading in the area.

	Report Weeks		This Influenza Year	
	Samples Tested	Positive Tests	Samples Tested	Positive Tests
Influenza A	38	11	211	39
Influenza B	38	1	211	5
RSV	30	7	168	27
Parainfluenza	30	5	168	20

[Type here]

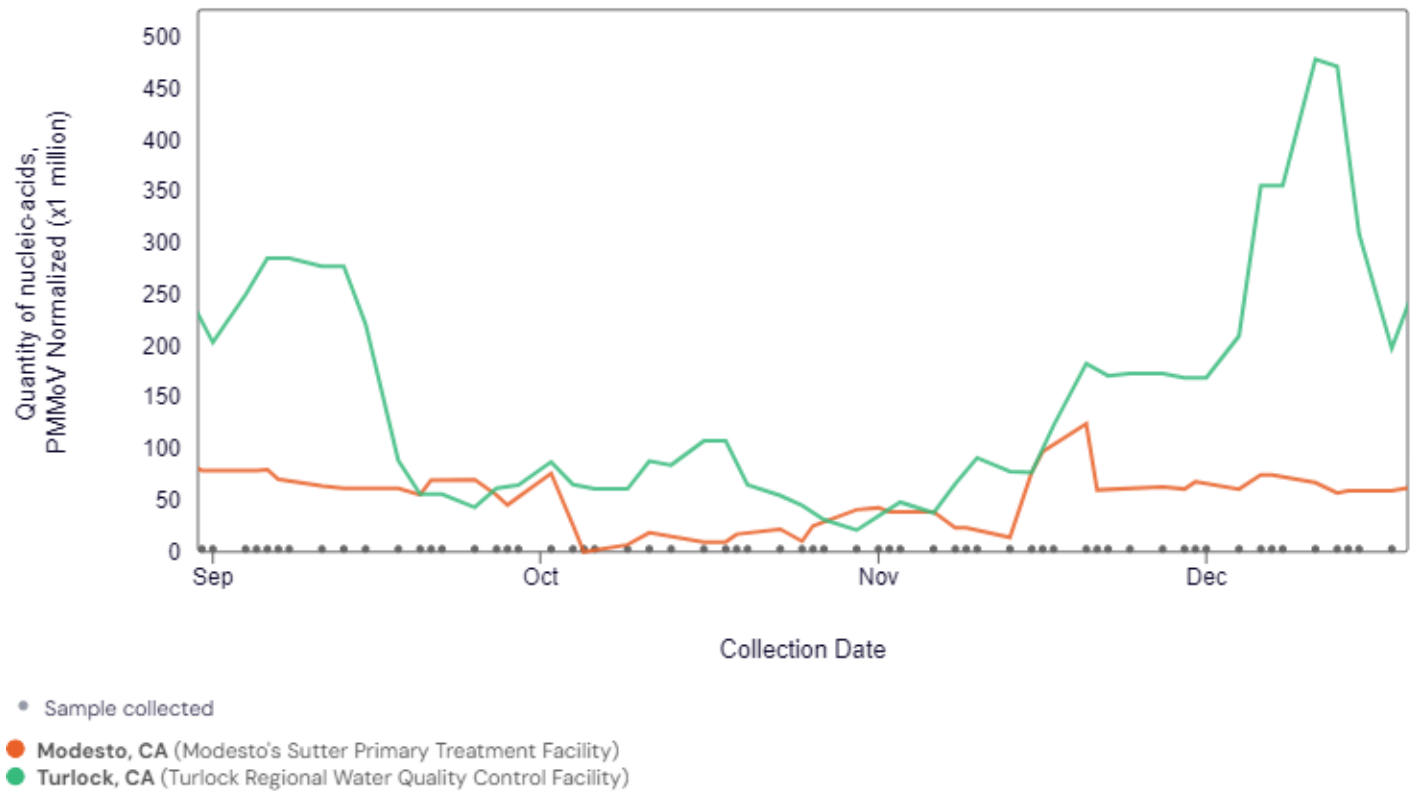
Adenovirus	30	2	168	12
Rhinovirus/Enterovirus	30	8	168	57
Human Metapneumovirus	30	1	168	1
Non-COVID-19 Coronaviruses	0	0	0	0

Table reference reflects the San Joaquin Public health Lab testing numbers.

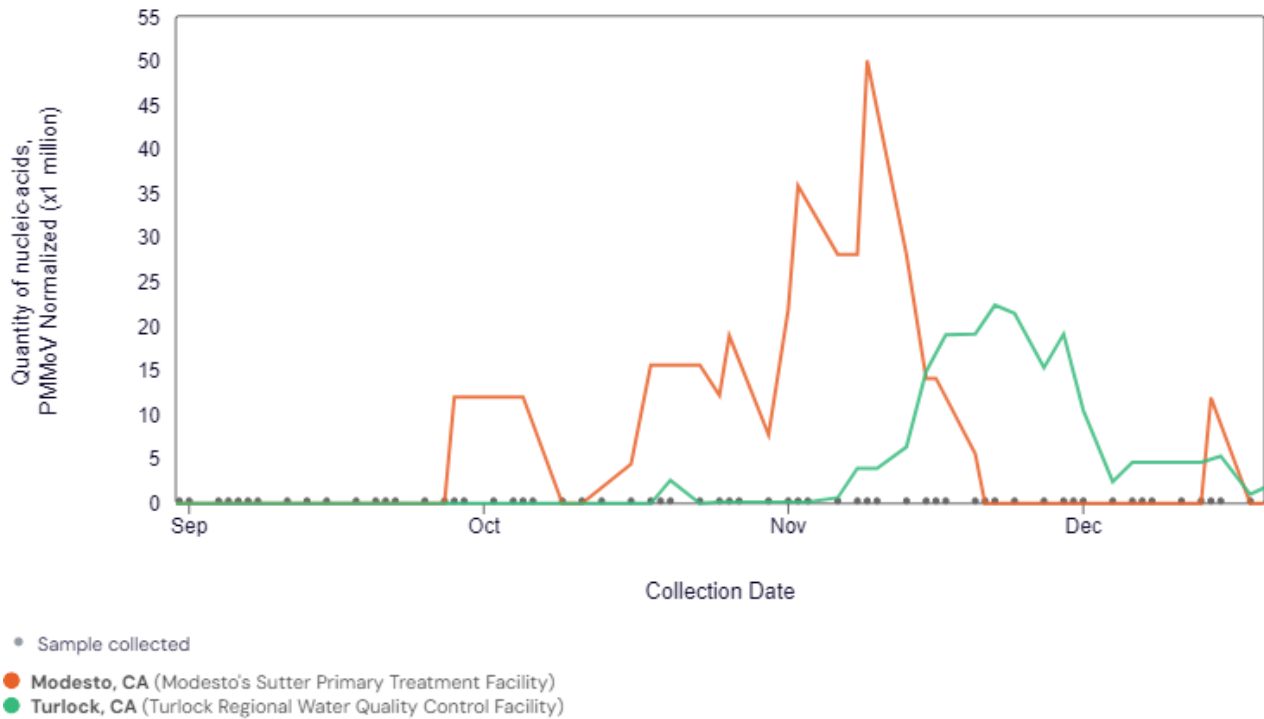
COMMUNITY MONITORING – WASTEWATER SURVEILLANCE

COVID-19

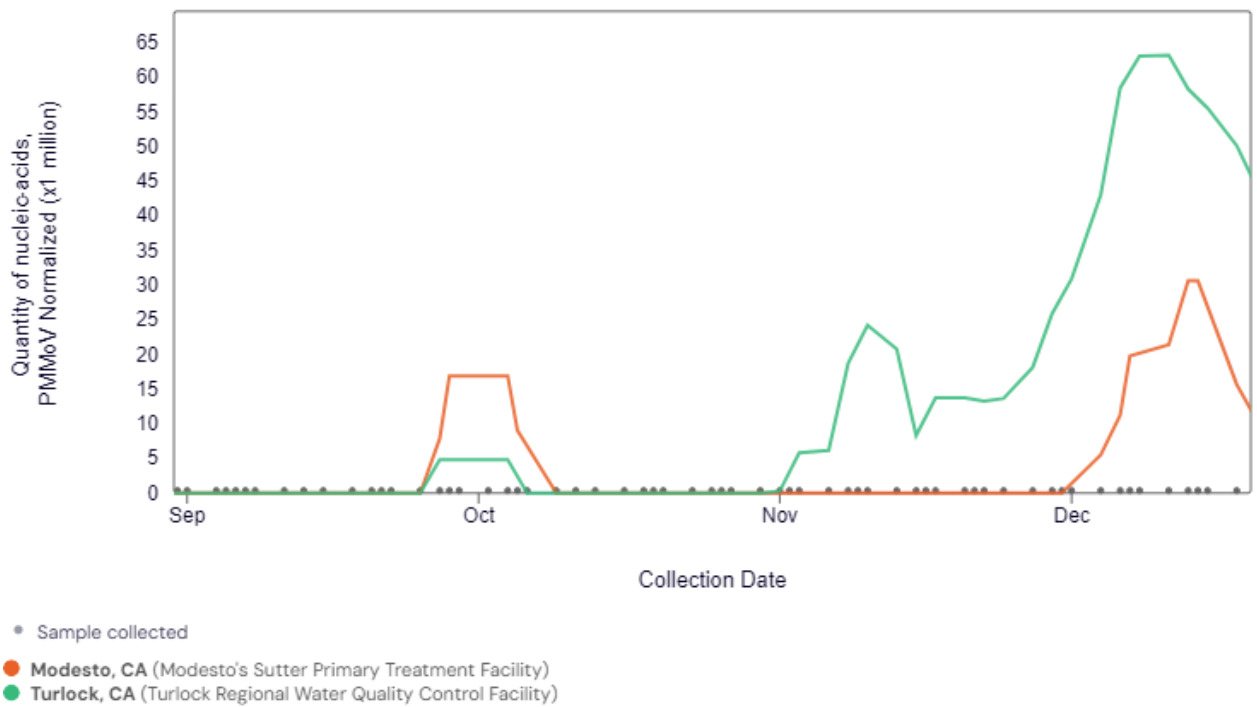
SARS-CoV-2, Stanislaus, CA



Influenza A, Stanislaus, CA



RSV, Stanislaus, CA



Source:

<https://data.wastewaterscan.org/tracker?charts=CjwQACABSABSBmZIZDk3ZlIGYWQ4NmE5WgNSU1ZyCjIwMjMtMDYtMDFyCjIwMjMtMTMtMDmKAQY0NmYyOTI%3D&selectedChartId=46f292>